

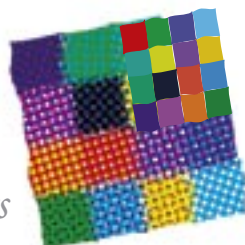


# PHOS200

## ON-LINE PHOSPHATE ANALYSIS

- Result within less than 3 minutes
- No filtration

*datalink  
instruments*



*dtli.*

PHOS200 is an on-line phosphate in water analyser. Using the colorimetric method, it allows the detection of very low concentrations of phosphate in water without filtration, thanks to its original spectrometer.

It is equipped with an automatic cleaning system which reduces the maintenance operation while keeping the long term reliability.

#### MAIN APPLICATIONS

- Sewage works
- Industrial effluents survey
- Drinking water
- River monitoring

#### NO FILTRATION

The multiple wavelength technology detection allows the application of PHOS200 on rough water without filtration.

#### AUTOMATIC CLEANING SYSTEM

The automatic cleaning system uses diluted acid solution to clean the flow cell. This technology has proven its efficiency and maintains the performance level of the analyser even when used on rough water.

#### BUILT-IN DATA LOGGER

The measurements results are stored in a static memory with date and time. More than 10000 results can be stored in the memory. They can be down loaded in a computer using the RS232 output.

#### ELECTRIC POWERING

PHOS200 can be powered with mains between 110 and 240VAC or with a 12Volts battery.

#### COMMUNICATION

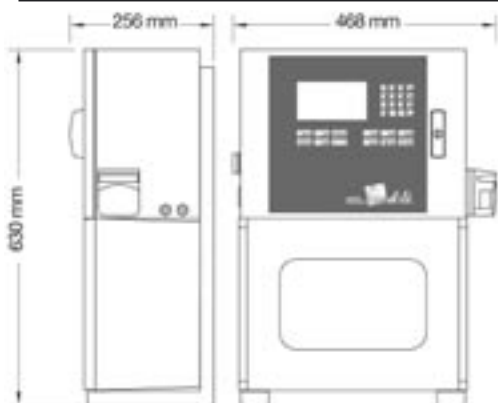
The RS232 output can be used for measurement results reading on short distance. A powered and insulated 4-20mA output allows long distance result communication.

#### REMOTE MEASUREMENT COMMAND

A remote measurement command (option) can be used to start a measurement cycle from an external clock signal in order to synchronize the analyser with a remote PLC.

#### INSTALLATION

PHOS200 is equipped with a sampling peristaltic pump whose flow rate is 0.5L/mn..



#### Measurement range:

Low range	0.02 – 1 mg/L PO4-P (rivers, drinking water)
High range	0.2 – 10 mg/L PO4-P (industrial effluents, sewage works)

#### Accuracy:

Low range	2% or 0.01 mg/L PO4-P (*)
High range	2% or 0.1 mg/L PO4-P (*)

#### Working temperature:

Working temperature:	5°C – 50°C
----------------------	------------

#### Outputs:

Outputs:	4 – 20 mA insulated Threshold relays, Fault relay.
----------	---

#### Communication:

Communication:	RS232 output for parameter setting or results downloading
----------------	---

#### Electrical powering:

Mains	90 – 240 VAC 50-60Hz 60W
Battery	12VDC 10W

#### Weight:

Weight:	15 kg
---------	-------

#### Standards:

Standards:	CE compliance – EN50081-2 EN50082-2 EN55011.
------------	--

#### Options:

Options:	pH measurement EC measurement 4 streams multiplexing
----------	--

(\*) Whatever is greater

