

TELECHEM-EXP Source

Overview

The Model 2020-EXP is a split chassis design that has a removable Control/Cleanup module and a separate removable pump module that can be used together or independently. The split design allows the overall weight of the unit to be distributed for users to easily carry inside of shelters or locations that are difficult to access. All modules can be stored for shipment inside of the provided transport case that has a telescopic handle and wheels.

The Model 2020-EXP is a split chassis design that has a removable Control/Cleanup module and a separate removable pump module that can be used together or independently. The split design allows the overall weight of the unit to be distributed for users to easily carry inside of shelters or locations that are difficult to access. All modules can be stored for shipment inside of the provided transport case that has a telescopic handle and wheels.

Specifications

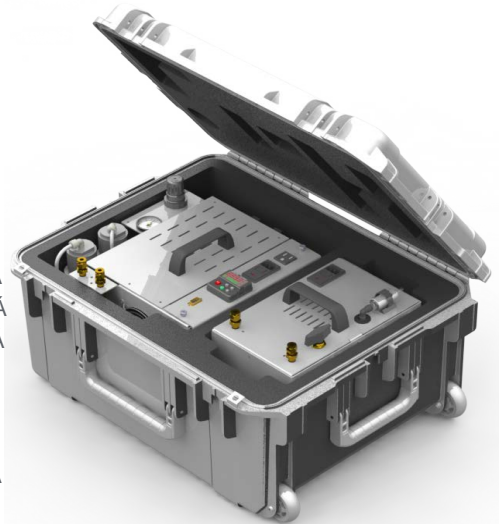
The Model 2020-EXP is a split chassis design that has a removable Control/Cleanup module and a separate removable pump module that can be used together or independently. The split design allows the overall weight of the unit to be distributed for users to easily carry inside of shelters or locations that are difficult to access. All modules can be stored for shipment inside of the provided transport case that has a telescopic handle and wheels.

The Model 2020-EXP is a split chassis design that has a removable Control/Cleanup module and a separate removable pump module that can be used together or independently. The split design allows the overall weight of the unit to be distributed for users to easily carry inside of shelters or locations that are difficult to access. All modules can be stored for shipment inside of the provided transport case that has a telescopic handle and wheels.

The Model 2020-EXP is a split chassis design that has a removable Control/Cleanup module and a separate removable pump module that can be used together or independently. The split design allows the overall weight of the unit to be distributed for users to easily carry inside of shelters or locations that are difficult to access. All modules can be stored for shipment inside of the provided transport case that has a telescopic handle and wheels.

Key Features

- Higher output option available
- Pressure or Vacuum mode for pump module
- Condensate/purge valving for moisture removal
- Automatic purge frequencies
- Optional with pressure gauge
- Rugged top mounted carrying handles



Key Features

Hydrocarbon Analyzer

Carbon Monoxide Oxidizer

Higher Output Pump

30 LPM @ 25 PSIG

Key Features

Higher Output Pump: 30 LPM @ 25 PSIG

Key Features

Pressure or Vacuum mode for pump module

Condensate/purge valving for moisture removal

Automatic purge frequencies

Key Features

Optional with pressure gauge

Rugged top mounted carrying handles

Pressure or Vacuum mode for pump module

Condensate/purge valving for moisture removal

Automatic purge frequencies

11 lbs (5.0 kg) D-modules in case

15 lbs (6.8 kg) pump module

10 lbs (4.5 kg) Control/Cleanup module

40 lbs (18.2 kg) w/HC Oxidizer

Key Features

Optional with pressure gauge

Rugged top mounted carrying handles

11 lbs (5.0 kg) D-modules in case

15 lbs (6.8 kg) pump module